



# JAPAN FOODS WEEK 2024

The Largest Exhibition of Fermented & Brewed Food and Beverage in Japan



## FERMEX JAPAN 2024

The Exhibition for Traditional Japanese Foods and Beverages



## International Washoku Expo 2024

The Exhibition gathering food ingredients and equipment for Japanese noodles



## International Noodle Expo 2024

# SHOW REPORT

**Date** July 30th (Tue) - August 1st (Thu), 2024 10am - 5pm

**Venue** TOKYO BIG SIGHT - East Hall 5・6

**Organizer** TSO International Inc.

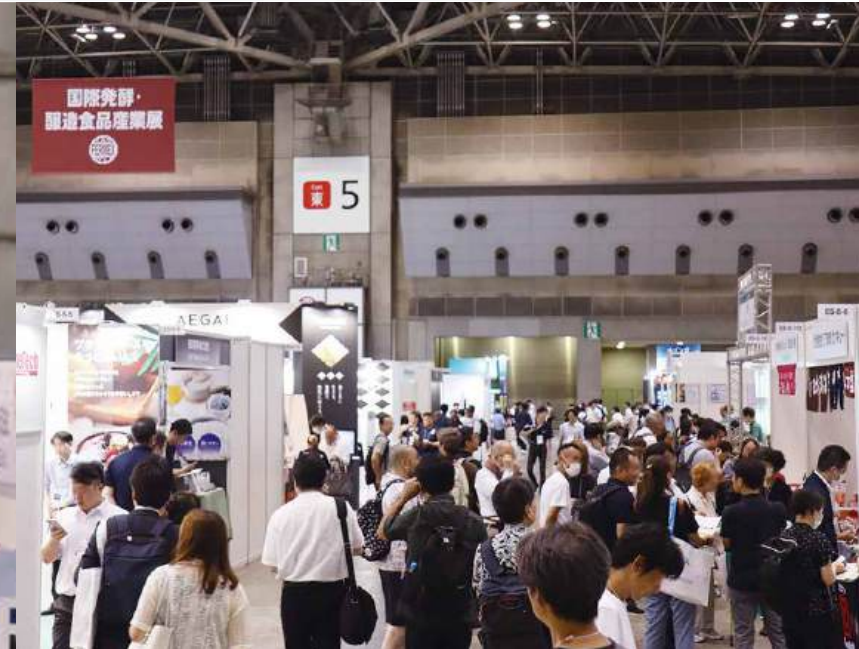


## TSO International

Gate to Global Business



***A total of 19,536*** professionals from the fermentation and brewing food, Japanese cuisine, and noodle industries visited from around the world.





**307 companies (including overseas companies) exhibited,**  
**and business negotiations were active for three days**





# General Information

## Exhibition



## JAPAN FOODS WEEK 2024

The Largest Exhibition of Fermented & Brewed Food and Beverage in Japan



### FERMEX JAPAN 2024

The Exhibition for Traditional Japanese Foods and Beverages



### International Washoku Expo 2024

The Exhibition gathering food ingredients and equipment for Japanese noodles



### International Noodle Expo 2024

## Organizer



**TSO International**  
Gate to Global Business

### Date

July 30th (Tue) - August 1st (Thu), 2024  
10am - 5pm



### Venue

TOKYO BIG SIGHT - East Hall 5•6



### Number of Exhibitors

307 Exhibitors



# Post Show Overview

## Exhibitor Review

• **307** Exhibitors

• **2** Countries & Regions

China and Japan



## Visitor Review

	July 30 (Tue) Sunny	July 31 (Wed) Sunny	August 1 (Thu) Sunny	Total
1.Visitors *1	5,921	6,644	6,903	19,468
2.Press *2	29	21	18	68
<b>Total</b>	<b>5,950</b>	<b>6,665</b>	<b>6,921</b>	<b>19,536</b>

### ● Number of visitors method of counting

\*1 Those who pre-registered, registered on the day, or did VIP check-in are counted as one person.

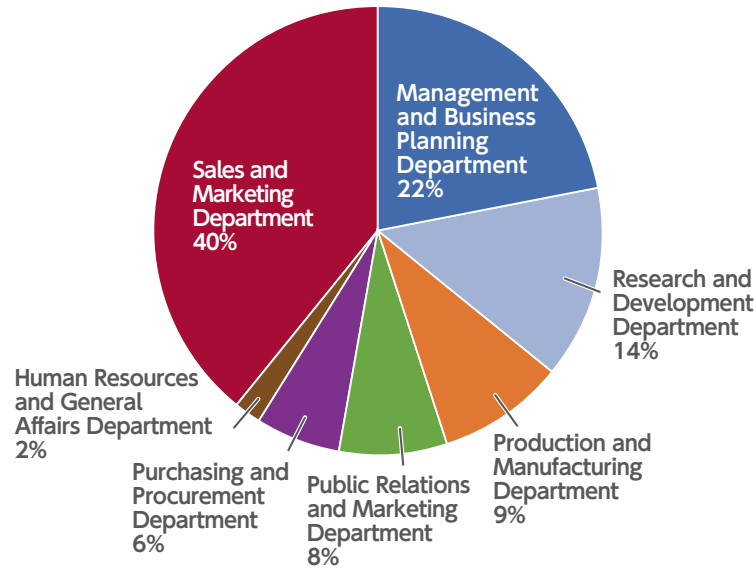
A visitor is counted as one person, even if they visit on multiple days.

\*2 The number of press registered for coverage by the show management office is counted.

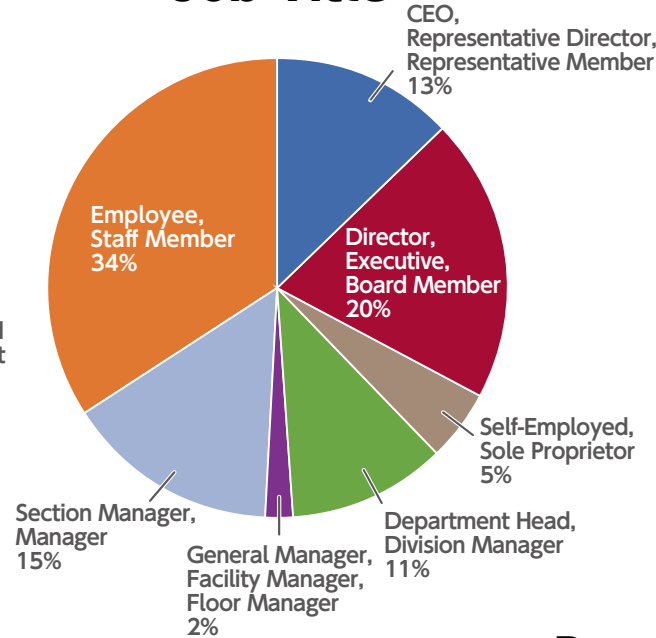
\* The number of guests and related persons who attended the meeting at the show management office is calculated in accordance with 1.

# Visitors Overview & Survey Results

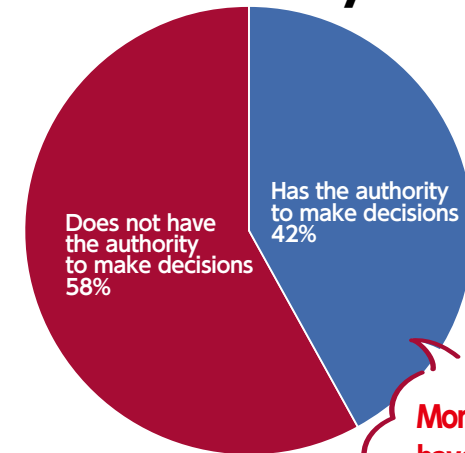
## Job Category



## Job Title



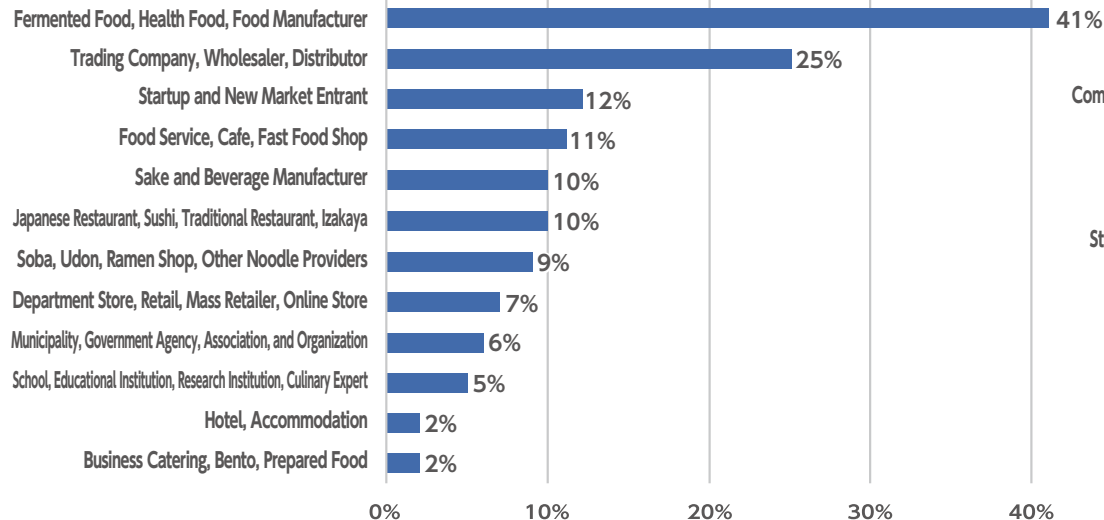
## Decision-Making Authority



More than **42%** have Decision-Making Authority!

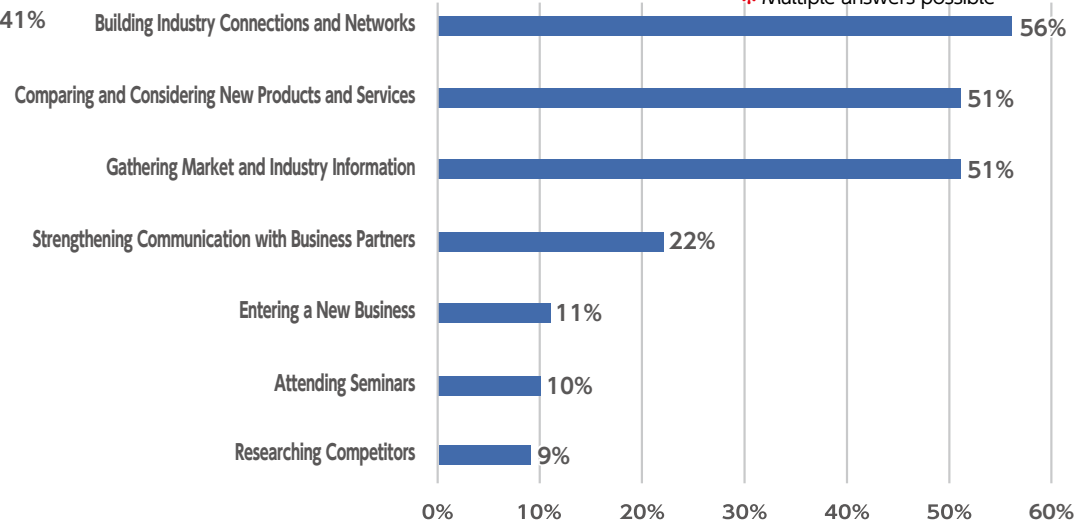
## Industry\*

\* Multiple answers possible



## Purpose of Visit\*

\* Multiple answers possible



# Visitor List

Executives from key companies visited in large numbers to discuss future investments, development, and procurement.

\* Japanese companies that visited in 2024 (some experts)

## Sake and Beverage Manufacturer



## Japanese Restaurant, Sushi, Traditional Restaurant, Izakaya



## Fermented Food, Health Food, Food Manufacturer



## Soba, Udon, Ramen Shop, Other Noodle Providers





# Exhibitor List ①

## ◆ JAPAN FOODS WEEK ①

ABC JAPAN /ABC Japan East Japan Co., Ltd. / Wing-M Co., Ltd.

Academic Industry Research

ADSEC

AICHIKENJOSHUA

Akirame no Warui Hitotachi

Anou holdings

ARIAKE JAPAN

ASANO MFG.

ASANUMA & CO.,LTD.

Asian Food Business Association

at-hand

Atomix Corporation.

Atton (Authentic Sanuki Udon Cooperative Association)

AXIS CORPORATION.

Azuma Shokuhin

B WORLD GROUP

Ball Wave

BET

Bihou Creation

Bio'c Co.,Ltd.

blayn

Blue Link

BOSTEC

Camossons

Center of Sales Channel Recovery Promotion for Restored Fisheries Processors/Senrei Co.Ltd./  
Kaishin Co.Ltd./ Office Benkei Co.Ltd. / Housei Shokuhin Co.Ltd. / Aji no Kakunoya

CERAMIC AI

CIMC Liquid Process Technology Japan

Comenohana

COSMOSOUND

Cowboy Craft/NOREN SAKE

Culture Generation Japan/IZAWA CORPORATION

DAESANG JAPAN

Daiichi Bussan

daiichi eizai

DAIICHI KOGYO

DAITOH TRADING

Daiya Industry

date jozo

DG SALES

Dobashien

DOT&LINE

Dr. Fry Japan Inc./enpetit Inc.

DRAFT WINE SYSTEMS Co.,Ltd.

DRICO LTD.

Echigo Yakuso

econos

EDM CORPORATION.

EDOGAWA BUSSAN

EICHI TWO

Endo Shoji/NIPPON TANSAN GAS CO.,LTD./Conair Japan G.K.

Extlink

F.C.C.

Family Foods/ TRY International Inc.

Ferment Valley NAGANO

FineTech

Frontier Engineering Co., Ltd.

Frozen Company LLC

Frozen Economy Association

FS Corporation

FUJI Factory

Fuji Industrial Sales Co., Ltd.

Fujiwara Techno-Art

Fukushima agri food innovation union

FUKUUI CHEMICAL INDUSTRY

General Incorporated Association for Future Era Restaurant Management Association

Global Kitchen

Good Man Service

GOTO-CONCRETE Co., Ltd.

Gourmet X Corp.

GROWIT

Guidable

Hakkou Shokuhin Aikoukai

harada sangyo

Hashimoto Brush Factory

HataLuck and Person

HATCHO MISO/Sendai Miso Shoyu Co., Ltd./Nihonkaimiso Co., Ltd.

hatsugagenmai

HEAD ON

HEIWA LEASING

hichifuku jozyo

Hikari Miso

Horiseimen

I&U associate

iBRIDGE

Ichido Co., Ltd.

ICHINOSE CO., LTD./SAMSON Co. Ltd./ Donaldson Company, Inc./  
Hamasho Corporation / SMC Corporation / Kuki Pump / Sanwa

Iida Trading

Inoue Syoten

ITOYA

IWATAYA FOOD

Izumi Syuzou

Izushokubunkakouen Co.Ltd

JA Aizu-Yotuba

Japan Fermentation Culture/Camossons/Hakkou Shokuhin Aikoukai



# Exhibitor List ②

## ◆ JAPAN FOODS WEEK ②

---

Japan Halal Business Association

Japan Kezuribushi Industrial Association/Japan Katsubushi Association

JAPAN TRAVEL AND TOURISM ASSOCIATION

Japanticket

JMCP

Jyokai Times

KAMADA SOY SOUCE

Kamatani Co., Ltd.

KAMINASHI

Kanbright

KANEYOSHI

KANTO KONGOKI INDUSTRIAL

KAWATA ENGINEERING CO.,LTD.

KE•OS MACHINERY

Kewpie Jyozo Co./Kewpie Co.

KEYENCE CORPORATION

Kiefel Corporation

KIKU PLAN DO

KINO Bussan/Maple Lab., Inc.

Kitahara sangyou

Kitchen Techno

KOBAYASHI FOODS

Kohseifoods Inc.

kome dreaming

kurita shokuhin

Kutsuma Seifun

KYOTO ELECTRONICS MANUFACTURING

KYOTO MUNICIPAL INSTITUTE OF INDUSTRIAL TECHNOLOGY AND CULTURE

Kyoto Tomohichi

Kyowa Medical Systems

LAK International, INC.

LUXURY CARD

M'sNET YAMAKITA

M2X

Maeda

maekawa taste co., ltd.

manpuku,.Co.Ltd.

Maruhachi Muramatsu

Marui-ito Shoten

Marusho

MARUTO

MARUYA HATCHO MISO/Shichifuku Brewing Co., Ltd.

masuda shouji

matsuendon

Media Network Japan

Meijo Machinery

Merci

meuron

micro-bub

MIDORI ANZEN

Mitsubishi Chemical Engineering Corporation

Mitsuhashi

Miwasoumenkonishi Co.,Ltd.

Morisons

Motomura Manufacture/SEIKA CORPORATION

Nagano City

Nagase & Co., Ltd.

NAGATA Brewing Machinery/NAGATA Engineering

Nakasato Seika

NAOMI

National Agriculture and Food Research Organization (NARO)

National Institute of Technology and Evaluation

NEC Solution Innovators

NEWBIO enterprise

NEWGREEN

NICHIMO BIOTICS

NIHON TRIM

NikkoYuba Manufacturing

Nippon Closures

Nippon Technology Solution

Niseko Food Commission

NISHIN

Nishinoya Shokuhin

Nisizuke

NOSAWA & CO.,LTD.

NSK ENGINEERING CO., LTD.

NTS

Oisoya

OKAYAMA UNIVERSITY OF SCIENCE

Okinawa Chosei Herbal Medicine Headquarter

Okui

OMCO

Organo Corporation

Osaka Research Institute of Industrial Science and Technology/  
KYOTO MUNICIPAL INSTITUTE OF INDUSTRIAL TECHNOLOGY AND CULTURE/  
Academic Industry Research Inc.

OSTEM CO., LTD.

peace apartment

PearlRice-MIYAGI.

PERSOL AVC TECHNOLOGY

PLOW A LAND

POSTAS

PURESON

Refine Wave (ISCT) Co.,Ltd

Regnio

Remixpoint, inc.

# Exhibitor List ③

## ◆ JAPAN FOODS WEEK ③

---

REVORN Co., Ltd.  
RYUKOUBOU  
Sagamiya Bonito Flake  
SAKAGUCHISEISAKUSHO CO.,LTD.  
SAKAI KIKAI  
SANIX INCORPORATED  
SANKO MACHINERY  
Sankyo Air Tech  
sankyo Kasei.,co.ltd  
SANKYO KUCHOU  
SanwaFoods  
SATAKE CORPORATION  
Sato Yosuke Shoten Ltd.  
SCENTMATIC  
SEIA  
Seibu Giken  
SENKO FARM  
Sennari  
SETBACK  
SHASHIN KAGAKU  
SHIBATA  
SHIMBI  
Shinokuni-akita  
Shinsei Suisan  
SHINYO GIKEN KOGYO  
Ship Paint Fujita  
SHOKUFO  
SHOWA FARM  
SHOWA SEITO  
sibuya jyoza  
SKE Equipment  
Smaregi

SMILECORP.  
SOUJI  
Space  
Spent Grain/OGATA Co.,Ltd.  
Sunnick  
Sunword AND Company  
Suzuki  
Syokunodoujyou  
Takada Shokuhin kougyou  
Takasago  
TAKEBISHI CORPORATION  
Tamago no Sato Farm  
Taragawa  
Tebiki  
Tentakaku Co.,Ltd  
TOKO Instruments  
Tokura Shoji  
tokuty  
Tokyo Institute of Technology  
Tomoda Selling & Sailing  
TONE SEI SAKUSHO  
Toplas Engineering  
TORECO  
Toshiba Lighting & Technology Corporation  
Toukai Soubi  
TOWA  
Toyo Techno Corporation  
TOYO TRADING  
TOYO UNIVERSITY  
Transworld Japan  
TSUKAMOTO  
TSUNAN SAKA BREWERY

TSUNO SHOKUHIN  
UENO FOOD TECHNO INDUSTRY  
UJI no TSUYU  
UNFILTER/Miisha Spirits  
UNIFOODS  
Unitaire corporation  
UNIVERSITY OF YAMANASHI  
UPR Corporation  
VideoStep  
Watanabe Food Solution  
WOODSON  
YABUTA Industries  
Yachiya Brewing  
YAEGAKI Sake & Spirits  
YAMACO  
Yamada Products Service  
YAMAGATA KAGAKU  
YAMAKYU  
Yamamoto Tadanobu Shouten  
Yamani Vinegar  
Yamato Manufacturing  
Yappli Inc.  
YOKOHAMA AUTOMATIC MACHINE  
Yoshihara Flour-Milling  
YOSHIZAWA



# Photo Gallery ①

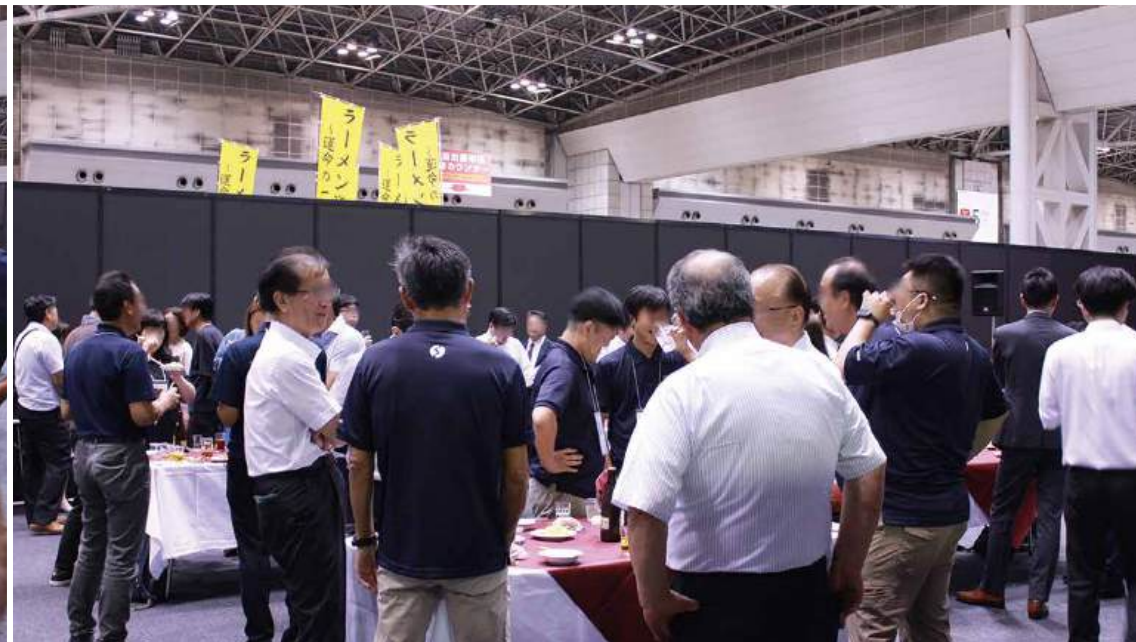
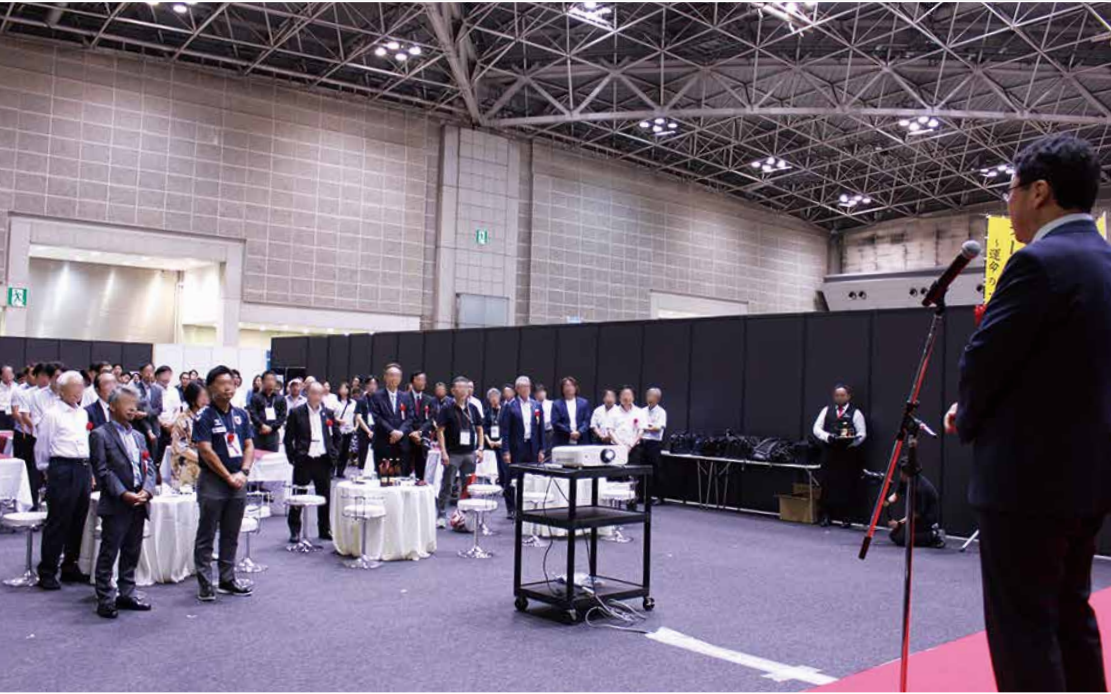
Numerous consultations on "experiencing and comparing products firsthand" and "discussions on implementation" were held daily





# Photo Gallery ②

At the venue's reception party, around 100 attendees, including key industry figures, engaged in networking





# Photo Gallery ③

Real marketing with five senses elevating product promotion and business deals





# Information for JAPAN FOODS WEEK 2025



## JAPAN FOODS WEEK 2025

The Largest Exhibition of Fermentation & Brewing Foods in Japan



### FERMEX JAPAN 2025

Specialized Exhibition for Restaurants and Food Manufacturers Catering to Foreign Customers



### INBOUND FOOD BUSINESS EXPO 2025

Specialized Exhibition for Noodle Industry Focused on Health, Taste Improvement, and Efficiency Automation

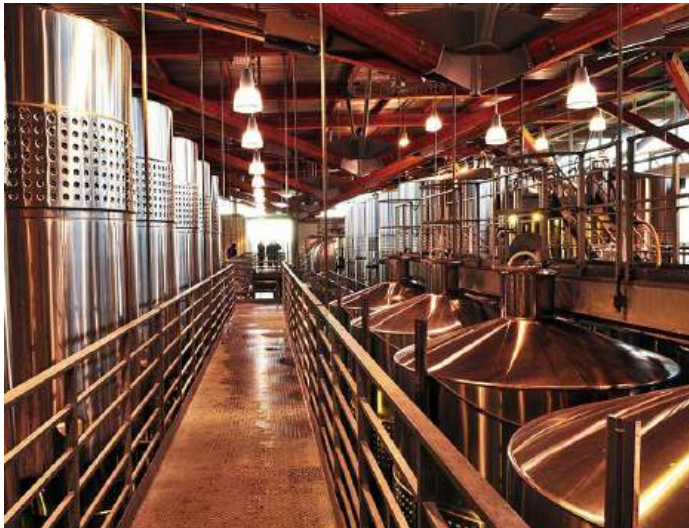


### NEXT NOODLES EXPO 2025

**Date** July 16th (Wed) - 18th (Fri), 2025

**Venue** TOKYO BIG SIGHT - South Hall

**Organizer** TSO International Inc.



Website

<https://hakkoexpo.jp/en/>



Inquiry

[overseas@tso-int.co.jp](mailto:overseas@tso-int.co.jp)